

Making a tooth mimic

Abstract

An additive manufacturing technique makes heterogeneous composites with tunable local microstructure and composition.

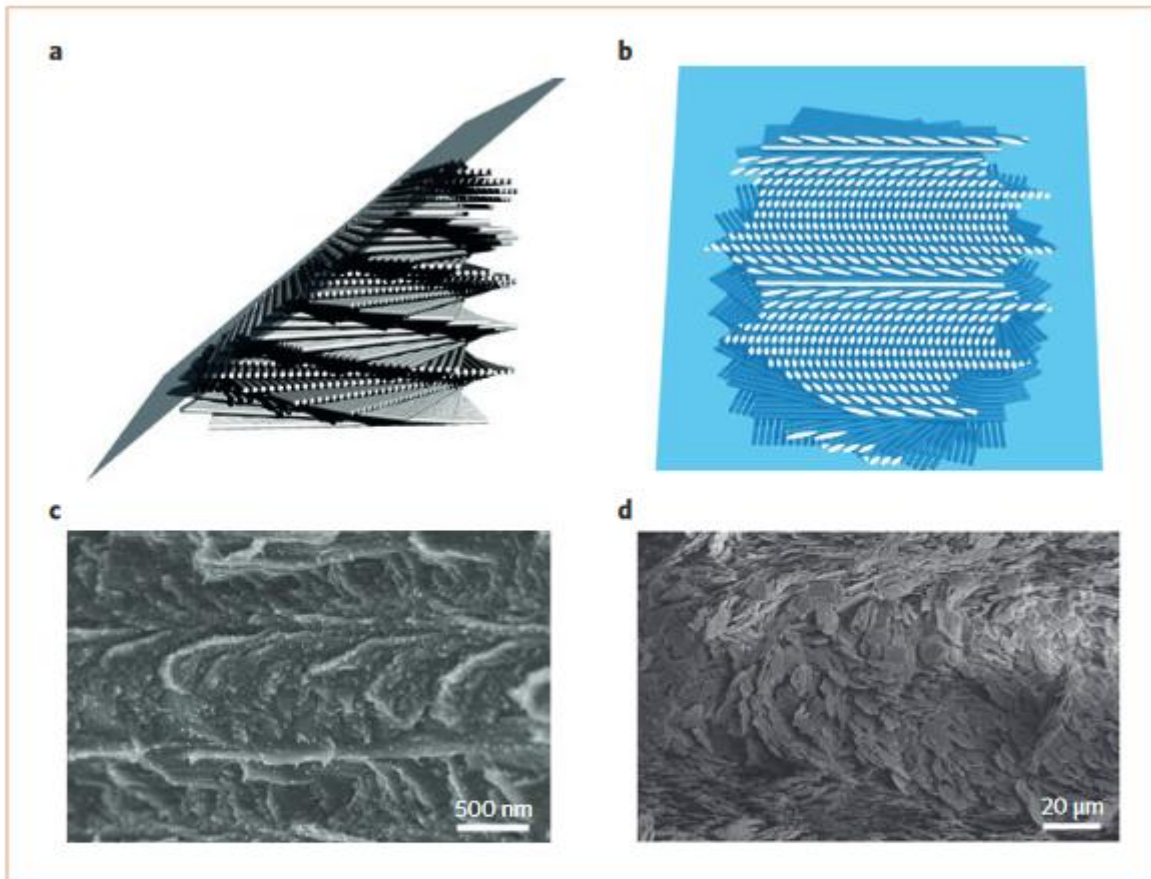


Figure 1 | Examples of heterogeneous composites. **a,b**, Schematic of a twisted-plywood-like structure of layered fibres (**a**), which gives rise to characteristic arc-like patterns when cut in oblique cross-sections (**b**). **c**, Arc-like patterns in the scanning electron microscope image of a freeze-fracture surface of the fang of the wandering spider *Cupiennius salei*[®] (courtesy of Yael Politi, Max Planck Institute of Colloids and Interfaces, Germany). **d**, Twisted structures produced by magnetically assisted slip casting (reproduced from ref. 6, Nature Publishing Group).